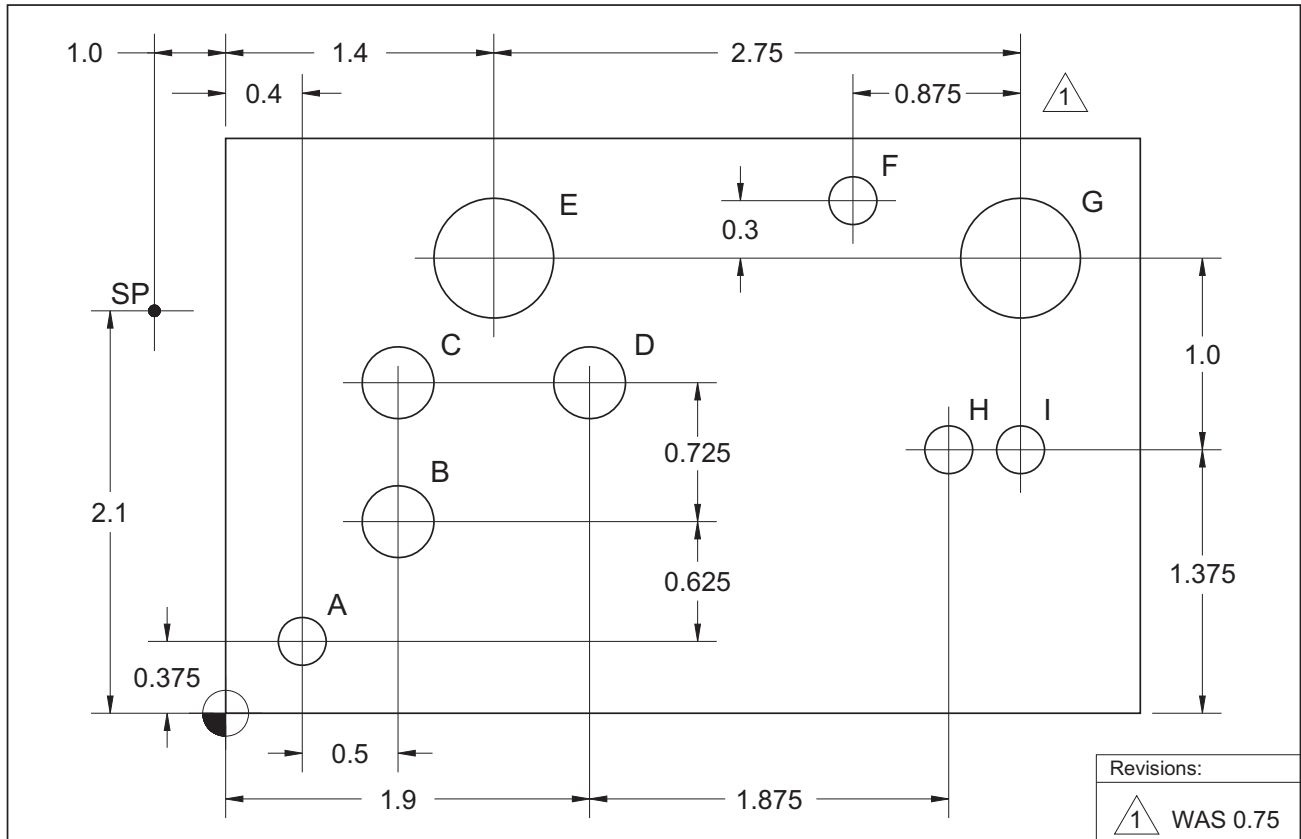


# 11-06

## Absolute and Incremental Mode

This project is a *revised* version of the previous project, 11-05. A single dimension in the drawing has been changed and identified as *Revision 1*. In the table below, fill-in the program input data that has changed, for both modes of programming, absolute and incremental.



G90 - ABSOLUTE MODE		
Hole	X-location	Y-location
SP		
A		
B		
C		
D		
E		
F		
G		
H		
I		
SP		

G91 - INCREMENTAL MODE		
Holes	X-motion	Y-motion
at SP	(0.0)	(0.0)
SP to A		
A to B		
B to C		
C to D		
D to E		
E to F		
F to G		
G to H		
H to I		
I to SP		