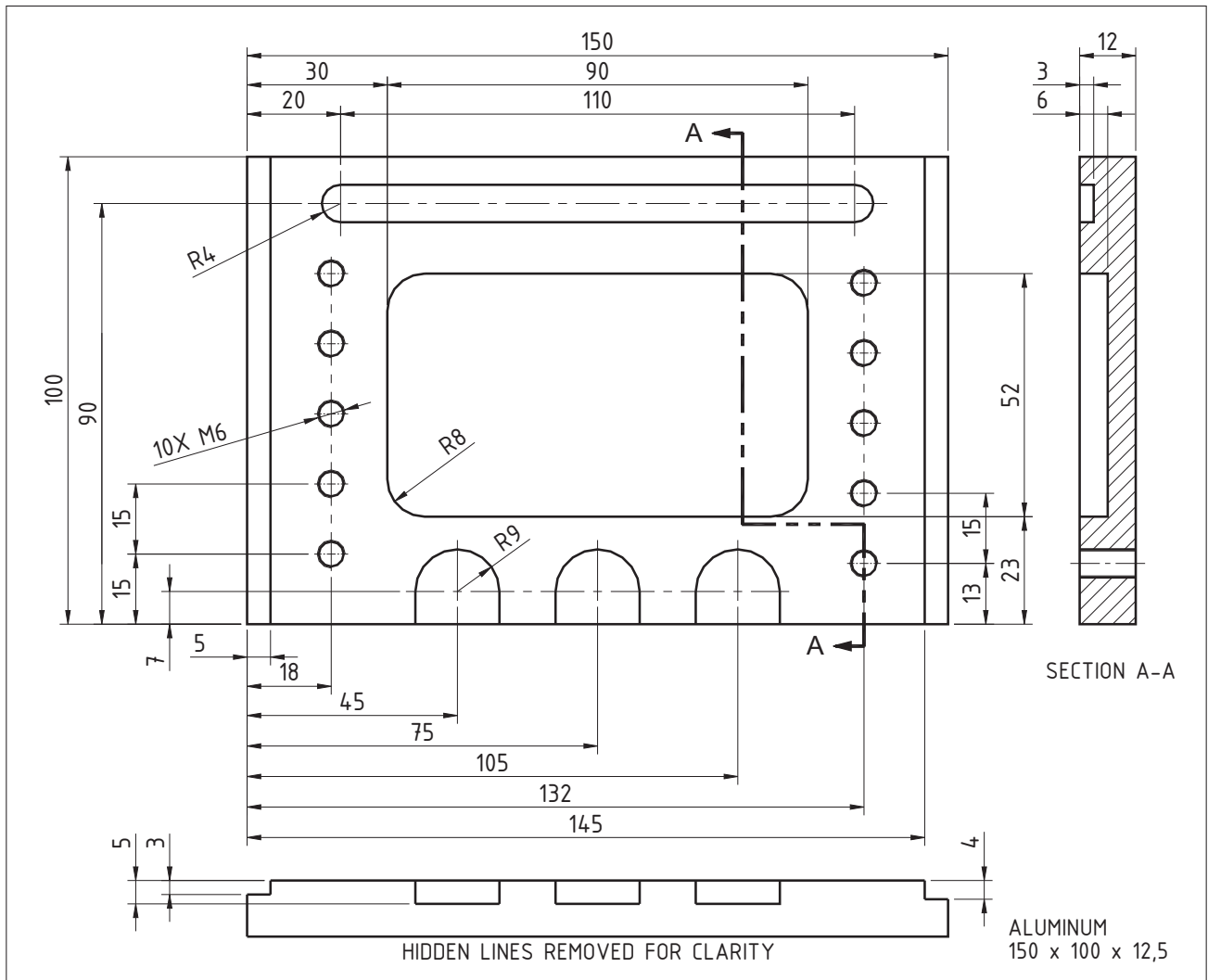


CNC programmers generally work from engineering drawings. Whether these drawings are in the CAD or paper form, they are a valuable source of information for programming. The objective of this simple metric milling project is to *evaluate* the drawing below, and answer the questions that follow on the next page.



📌 Notes:

#	Question	Answer
1	Explain the dimension R8	
2	How deep and wide is the closed slot?	
3	Where would the most likely program zero (program origin) be on the part?	
4	What kind of material is used for the part?	
5	What does the designation 150 x 100 x 12,7 mean?	
6	How would you explain the dimension 10X M6?	
7	How deep are the cutouts in front of the part?	
8	What is the pitch of the tapped holes?	
9	Identify the XY coordinates for the upper right tapped hole?	
10	What drill selection would be most suitable for the tap?	
BONUS QUESTIONS		
11	If the pocket were to be cut from its exact mid-position, identify the XY point where the tool would start from	
12	Describe briefly how would you setup and machine the part, based on the supplied drawing.	